



Norfolk Island Travel Centre

meet the locals...

PO Box 172, Norfolk Island 2899, Sth Pacific
Phone from: AU 0011 6723 22502 NZ 00 6723 22502

Fax from: AU 0011 6723 23205 NZ 00 6723 23205

Email: travel@travelcentre.nf

Website: www.norfolkislandtravelcentre.com

ABN: 30 714 493 146



15th Anniversary Norfolk Island Travel Centre 3D Archery Championships

Greetings from Norfolk Island!

Thank you for your enquiry regarding the 15th anniversary **Norfolk Island Travel Centre 3D Archery Championships** being held on the Island in July 2017.

Please find enclosed further information regarding the holiday packages available.

To proceed with a booking please return completed reservation forms (last two pages of this document) by fax 0011 6723 23205, email kelly@travelcentre.nf or by airmail post.

If you have any special requests or if we can be of further assistance please don't hesitate to contact us at Norfolk Island Travel Centre.

We hope you can join us for an exciting Archery filled holiday on our beautiful Island!

Kind regards,

Kelly

Kelly Schmitz and all at Norfolk Island Travel Centre



15th Norfolk Island Travel Centre 3D Archery Championships 02 – 06 July 2017

We had an awesome time recently at the 3D archery comp. We have been competing in archery for a while now and yours is the best competition by far. Well organised, friendly, efficient and just a great way to enjoy your favourite sport on holiday. – K.D. from Avoca

The archery 3D field on Norfolk Island is perhaps the best 3D field in the world, it is certainly the most enjoyable I have had the pleasure to shoot. - G.M. from Kirrawee

In 2017 join Archery Norfolk Island for the 15th Norfolk Island Travel Centre 3D Archery Championships. This popular event brings together Australian and New Zealand shooters to the perfect Island location for an excellent week of archery action.

The club will be presenting a week to suit the whole family with 3D events organised for all ages including “cub” divisions, adult compound, recurve and long bow. Conveniently held during school holidays, the Norfolk Island Champs are excellent for junior shooters to take part in their first international competition. A Traditional Shoot day adds to the fun and is a great opportunity for the kids to feel the spirit of ‘Robin Hood’! Norfolk is an exceptionally friendly and safe place for the whole family to holiday and event locations are very easily accessed.

For those interested in travelling with friends from your local archery club please ask Norfolk Island Travel Centre about a special club promotion where some accommodation properties provide 1 in 10 archers stay free. For larger groups this can be teamed with 1 in 21 archers fly free. Conditions apply, contact us for more info.

Combine the fun of the championships and the wonders of Norfolk for the perfect week away!

Archery Norfolk Island

Registration Fee - AU\$100 for adults / AU\$50 for Juniors & Cubs is additional to cost of holiday package prices and is payable direct to the Archery Club once on the island.

Presentation Dinner - Thursday 06 July 2017 - Cost is additional. Venue, time and price TBA.

NEW! Trad shooting activities available Monday, Tuesday & Thursday afternoons. Traditional Archery – back to basics! This will be the 2nd year Norfolk Island Archery has offered an optional Traditional Archery event to all 3D Archery Championship participants. Open to Trad shooters and also those who don’t normally shoot Trad ... you’re in for a treat in getting back to basics with simple, uncomplicated bows and handcrafted arrows. Held as a progressive around-the-Island shoot. Each afternoon after the comp shoots, you’ll head to private properties across the island and the fun will begin as we test your Trad skills! Entry cost TBA, BYO Trad and wooden arrows.

For more event information please email archery@norfolk.nf

Norfolk Island

Norfolk has a unique beauty of its own, with its renowned tall majestic pines, sheer cliff faces, coral reefs and beautiful beaches. Almost one third of the island is devoted to National Parks and Reserves.

But Norfolk Island is far more than a picturesque island in the South Pacific; it is paradise with a past. What was once a convicts' nightmare is now the tranquil home of the descendants from the *Mutiny on the Bounty*, who have their own unique culture and their own language.

There is much to see and do on Norfolk Island including, golf on an incredibly scenic course beside the sea, fishing, sea kayaking, edible gardens & eco tours, art galleries, bushwalking, glass bottom boat coral reef trips & Philip Island trekking, golf, bowls, tennis, squash, yoga, kayaking, swimming, snorkelling, and much more.



Holiday Package price Includes:

- Return economy class 'seat plus bag' airfare to Norfolk Island
- All pre-paid airline taxes
- Meet & greet at Norfolk Island Airport
- Return Airport Transfers on Norfolk Island
- Half Day Island Tour
- 7 night's accommodation
- 7 days car hire, petrol is additional
- Complimentary 'A Walk In The Wild', a unique rainforest walk
- Complimentary Mini Golf - Golf your way through Norfolk's History
- Bonus Norfolk Island discount shopping card with free gift

Perhaps you would like to relax before or after the event, please let us know if you would like to extend your holiday.

Flight Times (subject to change)

Holiday package prices are based on the following flights ...

SYDNEY

Friday 30 June 2017 – Air New Zealand Flight NZ 762

Departs Sydney International Terminal 9:40am / Arrives Norfolk Island 1:15pm

Friday 07 July 2017 – Air New Zealand Flight NZ 763

Departs Norfolk Island 2:25pm / Arrives Sydney International Terminal 4:20pm

BRISBANE

Saturday 01 July 2017 – Air New Zealand Flight NZ 764

Departs Brisbane International Terminal 11:00am / Arrives Norfolk Island 2:15pm

Saturday 08 July 2017 – Air New Zealand Flight NZ 765

Departs Norfolk Island 3:30pm / Arrives Brisbane International Terminal 5:10pm

Saints Apartments

Self-contained one & two bedroom apartments only 5 minute walk to cafes & restaurants. Apartments are spacious with large bedrooms and living area. Saints has a BBQ area with outdoor seating, herb gardens and a guest laundry.

Included: Daily Car Hire per unit (petrol usage extra), Return Airport Transfers & Half Day Island Tour



ADULT PACKAGE PRICES – 8 days / 7 nights

From: \$AU per person	Quad Two Bdrm	Triple Two Bdrm	Twin One Bdrm	Twin Two Bdrm	Sole One Bdrm
Ex Brisbane	939	1019	1029	1199	1399
Ex Sydney	989	1069	1079	1249	1449

Pine Valley Apartments - Official 2017 3D Archery Championships sponsor

Pine Valley Apartments are centrally located, just a short walk to restaurants and shops. Comfortable fully self-contained one and two bedroom units set amongst beautiful gardens. Facilities include guest laundry, transit lounge and barbeque gazebo area.

Included: Daily Car Hire per unit (petrol usage extra), Return Airport Transfers & Half Day Island Tour



ADULT PACKAGE PRICES - 8 days / 7 nights

From: \$AU per person	Quad Two Bdrm	Triple Two Bdrm	Twin One Bdrm	Twin Two Bdrm	Sole One Bdrm
Ex Brisbane	999	1049	1219	1249	1799
Ex Sydney	1049	1099	1269	1299	1849

Fletcher Christian Apartments - Official 2017 3D Archery Championships sponsor

Ideally located close to shops and restaurants, these one and two bedroom apartments offer the makings of a very pleasant stay on Norfolk Island. All units are self-contained, serviced daily and are set amongst beautiful tropical gardens. A guest swimming pool and BBQ area is also available for guests use.

Included: Daily Car Hire per unit (petrol usage extra), Return Airport Transfers & Half Day Island Tour



ADULT PACKAGE PRICES - 8 days / 7 nights

From: \$AU per person	Quad Two Bdrm	Triple Two Bdrm	Twin One Bdrm	Twin Two Bdrm	Sole One Bdrm
Ex Brisbane	999	1099	1219	1299	1799
Ex Sydney	1049	1149	1269	1349	1849

Castaway Hotel Norfolk Island

Castaway one of the most centrally located hotels on Norfolk Island, recently purchased by a local young couple with full room renovations due to be complete by May 2015, guests can choose from 8 hotel style rooms fully renovated including new bathrooms or 6 spacious self-contained apartments newly refurbished. The stylish reception, restaurant and bar incorporates fresh modern style yet intertwines hotel history and special family stories Sarah is only too happy to share with guests! A relaxing setting for breakfast, lunch, dinner or high tea with views through French doors framing a sub tropical garden and serene mountain back-drop.

Included: Daily Car Hire per unit (petrol usage extra), Return Airport Transfers & Half Day Island Tour

Garden view hotel rooms



ADULT PACKAGE PRICES – 8 days / 7 nights

From: \$AU per person	Twin Garden Room	Sole Garden Room
Ex Brisbane	1269	1749
Ex Sydney	1319	1799

Banyan self-contained apartments



ADULT PACKAGE PRICES - 8 days / 7 nights

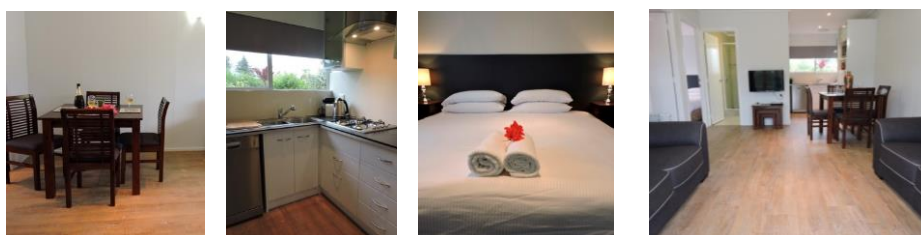
From: \$AU per person	Quad Two Bdrm	Triple Two Bdrm	Twin One Bdrm	Twin Two Bdrm	Sole One Bdrm
Ex Brisbane	1099	1249	1269	1549	1749
Ex Sydney	1149	1299	1319	1599	1799

Hibiscus Crown Apartments

You could say Hibiscus Crown is within Norfolk's (unofficial) CBD! A short 1 minute drive to shops, cafes & restaurants. Located on New Cascade Road leading off the main street ***this is a great property for those who want to be close to town yet enjoy tranquility & privacy within a lush garden setting.***

Apartments are fully self-contained with a fully equipped kitchen including microwave, oven & cooktop. The adjoining living area features comfortable dining table & chairs, armchairs & flat screen TV including full range of digital television channels. All bedrooms are separate to the living area & beds can be configured as a luxury King bed or two single beds in each bedroom. Additional rollaway or standard single bed available for the living area on request. All bathrooms include a walk in shower & instant gas hot water system. Towels are provided with optional towel change mid-week. Apartments come with their own porch area plus guests share a gas BBQ area & guest laundry equipped with washing machine & dryer. We haven't forgotten the Norfolk Island must haves including a full picnic set with each unit to enable guests to take advantage of the many scenic (free) BBQ spots around the island & beach towels. Our Hibiscus office opens each morning from 8am so we're on hand before guests head out sightseeing for the day. Out of hours our Guest Manager is on call. Each apartment is provided with a local mobile phone, guests are welcome to recharge & use the phone provided (usage fees apply). We have wifi! All apartments are within wifi range, please note usage fees apply. Guests can purchase prepaid hotspot cards from our office.

Included: Daily Car Hire per unit (petrol usage extra), Return Airport Transfers & Half Day Island Tour



ADULT PACKAGE PRICES - 8 days / 7 nights

From: \$AU per person	Quad Two Bdrm	Triple Two Bdrm	Twin One Bdrm	Twin Two Bdrm	Single One Bdrm
Ex Brisbane	1209	1279	1289	1449	1939
Ex Sydney	1259	1329	1339	1499	1989

Poinciana Cottages

Small Boutique property, locally owned, a family business established thirteen years. Hosts Peter and Jackie Pye, live on the property and have a great knowledge of the island which they would love to share with you and make your stay in their little piece of paradise relaxing and enjoyable. The design and layout is perfect for small groups of 10-15 people. With the BBQ and summer kitchen set up friends can relax by the Poinciana and enjoy a cold drink at the end of the day, or a meal at any time of day.

Included: Daily Car Hire per unit (petrol usage extra), Return Airport Transfers & Half Day Island Tour



ADULT PACKAGE PRICES - 8 days / 7 nights

From: \$AU per person	Twin One Bdrm	Sole One Bdrm
Ex Brisbane	1299	1949
Ex Sydney	1349	1999

Whitewood Sea

Owned & Managed by Norfolk Island Travel Centre

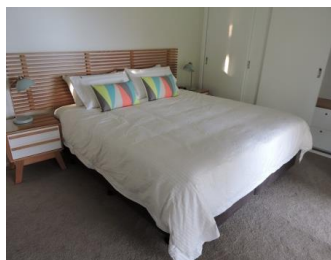


Enjoy magnetic views across Creswell Bay to majestic Phillip Island from a beautifully appointed, newly renovated house. Modern throughout, this two bedroom two bathroom house has attractive features including hardwood flooring, DVD player and digital TV, bluetooth sound system, wifi access (usage costs apply), supersize bath, deluxe picnic basket and expansive verandah to enjoy the view. Guests will love the wrap-around lounge to switch between sea views and the tellie. Accessibility is excellent with ramp access to the house and an extra-large shower in the main

bathroom. Perfectly located near Norfolk's best swimming beach Emily Bay, world heritage listed KAVHA historic area, nature walks and two of Norfolk's best restaurants (got to love Dinos being only 3 doors down) Whitewood Sea is positioned perfectly to set the tone for a relaxing, unforgettable holiday on Norfolk Island

www.whitewoodsea.com

Included: Daily Car Hire per unit (petrol usage extra), Return Airport Transfers & Half Day Island Tour



ADULT PACKAGE PRICES - 8 days / 7 nights

From: \$AU per person	Quad Two Bdrm	Triple Two Bdrm	Twin One Bdrm	Twin Two Bdrm	Single One Bdrm
Ex Brisbane	1199	1249	1399	1549	2049
Ex Sydney	1249	1299	1449	1599	2099

If the accommodation of your choice is not included in holiday packages above, Norfolk Island Travel Centre will be happy to provide you with a specially discounted quote based on your preference.

For those travelling as a family, please let us know if you'd prefer a holiday home option. To work out the best price for a family let us know the number of children and age of each child.

Prices are subject to availability and subject to change up until time of final payment and ticketing is completed.

FURTHER INFORMATION

Conditions/Cancellation Penalties

Please note non-refundable deposit of \$200 per person due at time of booking. **Final payment is due no later than Friday 24th March 2017.** Airfare is subject to availability and non-refundable after issue. Changes are permitted until day before departure however date/route changes can only be made within 7 days travel dates either side of your original booked travel dates. Amendments, upgrades and name changes are NOT permitted within 24 hours prior to departure. Payment of a change fee (per passenger) applies plus any applicable upgrade fees to cover the difference between the original fare and the new fare. Accommodation cancellation penalties apply within 90 days prior to travel. Within 60 days of travel, up to 100% cancellation fees may apply. We strongly recommend travel insurance to protect you in some instances for unforeseen cancellation.

Payment Options

Prices shown are in Australian dollars and are payable by personal or bank cheques or by direct deposit into our Commonwealth Bank account (please see bank details below).

If you would prefer to pay by Visa or MasterCard, please add 1.5% to the total cost of your holiday package.

Bank Account Details

Direct deposits into our Commonwealth Bank account can be made at your local Commonwealth Bank or via online banking

Account details as follows...

Account Name: 'The Travel Centre Pty Ltd Trust Account'
BSB Number: 062 950
Account Number: 1008 4974

***Important* Please confirm amount and date of payment into our bank account when monies have been transferred.**

Passport & Visa requirements

From 1 July 2016 travel to Norfolk Island from mainland Australia will be classed as domestic travel. The flights will still depart from and arrive at the **international terminal**.

The Department of Immigration and Border Protection advises anyone travelling between Norfolk Island and mainland Australia will be required to identify themselves. Although passports and visas are no longer mandatory for Australian citizens when travelling to Norfolk Island from Australia, a valid passport continues to be the preferred method of identification.

- We recommend travelling with a passport if you have one, however technically from 01 July photographic identification, for Australian citizens a photo ID such as an Australian driver's licence, will be acceptable.
- It's important you provide us with your full name as it appears on your Passport or Drivers licence to ensure your ticket matches your ID document.
- Those without a passport may experience some delays with manual customs checks
- Those travelling without a passport should also be aware that in the event of a flight diversion e.g. due to inclement weather preventing the aircraft to land on the island, the flight could be diverted to New Zealand. Those passengers without an Australian or NZ passport will not be permitted to leave the transit area at Auckland airport.

Foreign passport holders and/or those travelling via New Zealand:

- Normal Australian Customs and Immigration procedures will apply when entry is made from outside Australia (including New Zealand). A passport (valid on entry and departure) is necessary and a visa may be required for some foreign passports. Non-Australian citizens are advised to carry their passport if flying between mainland Australia and Norfolk Island.
- For more information please check Border Force and the Australian Commonwealth NI Reform website which are regularly updated with current information:
<http://www.border.gov.au/Trav/Ente/Goin/Arrival/Travel-Documents-for-Entry-to-Australia>
<http://www.border.gov.au/norfolk-island>
http://regional.gov.au/territories/norfolk_island/reforms/domestic-travel.aspx

Domestic Travel Insurance *(current as at 18/07/16)*

We strongly recommend that passengers be covered by adequate travel insurance for protection against amendment or cancellation costs/ additional expenses, luggage and travel documents, rental car insurance excess, travel delay, special events, loss of income, disability, accidental death and personal liability. (Please refer to the policy wording for full details of cover). Please bear in mind your destination is an island, which is subject to aircraft diversion in extreme weather conditions. Airlines do not accept responsibility for flight delays or cancellations due to weather, passengers electing not to take travel insurance do so at their own risk for costs or losses sustained. **Please be aware that you are not covered by travel insurance until payment is received at Norfolk Island Travel Centre.** This should be forwarded in conjunction with deposit payment of your holiday package.

Please note: From 1 July 2016, medical treatment on Norfolk Island will be covered by Medicare as it is on mainland Australia. Emergency medical treatment will be covered by Medicare or your private health insurer. If you need to be medically evacuated from the Island, you will be transferred from Norfolk Island's health facility to the closest, appropriate mainland hospital. The cost of the medivac will be covered by the Australian Government.

Norfolk Island Travel Centre is happy to offer a 10% discount to clients:
8 day – Domestic Plan D

CoverMore	0-69yrs	70-79yrs	80-99yrs
\$50 excess \$10,000 Additional Expenses & Cancellation Costs	\$69.00 per person Less 10% \$62.10	\$96.00 per person Less 10% \$86.40	\$124.00 per person Less 10% \$111.60

Please note: the above prices are to be used as a guide only and are per person cost for single adult traveler.

Pre-existing Medical Conditions may require assessment by the CoverMore Medical Assessment team (refer to the CoverMore brochure/PDS for automatically covered medical conditions). You may complete your pre-existing medical assessment [online via this link](#). Alternatively please call the CoverMore Assessment team on **1300 916 517** for assistance.

Once you have received your assessment and Approval number, contact the Travel Centre with the approval number to enable us to provide you with an accurate quote for your insurance including your pre-existing medical condition*. **We will pass on a 10% discount for pre-existing medical applications arranged through Norfolk Island Travel Centre.**

** If you have a pre-existing medical condition, should this condition require that you cancel your trip prior to departure or return home early/extend your trip, unless you have disclosed the condition, please note there will be no cover available under Cancellation Costs or Additional expenses.*

Are you planning multiple trips throughout the year?

Have you considered an annual multi-trip policy? Ask the Travel Centre for a competitive quote with **our special Norfolk Island Travel Centre 20% discount**, just advise us of the countries you intend visiting and the duration of each journey (a journey is defined as the period commencing at the time you leave your home and ceasing at the time you return to your home). For example if you are aged up to 50 years you could have annual travel insurance cover (excluding Americas and Africas) for 12 months cover from **\$447.20** (maximum trip duration for each trip being 30 days - \$100 excess Unlimited cancellation cover).

Tours on the Island

Norfolk Island has a great variety of tours available for you to enjoy. Norfolk Island Travel Centre is happy to assist with pre-booking your tour and dining requirements. As some tours have limited availability and because you're visiting during a busy period we strongly recommend pre-booking to avoid disappointment. Visit our website for our full independent list of tours and activities that Norfolk Island has to offer:

<https://www.norfolkislandtravelcentre.com/tours-activities>

Mobile Phones

You are able to use your mobile phone on Norfolk Island. Mobile phones must not be networked locked as you will need to purchase a Norfolk Island SIM card. SIM cards cost AU\$20 and include AU\$10 worth of call time. Mobile phone SIM cards and recharge cards can be purchased from a variety of stores on the Island. \

International Roaming is available for visitors to the Island who have international roaming activated on their Postpaid Mobiles. International roaming is available with most larger service providers. Roaming is not available for prepaid mobiles. Normally, roaming is already active on your postpaid service, however it may pay to check with your service provider prior to coming to the island.

Free Wifi:

Free wifi is available at the [Norfolk Island Airport](#) during flight arrival and departure times only.

Check-in

Flights depart from the international terminal at Sydney and Brisbane airports. Check-in is required two hours prior to the scheduled departure time.

Air New Zealand operates flight to Norfolk Island.

Onboard they provide free of charge tea, coffee & water. Snacks and drinks can be purchased on board at an additional cost by credit card (no cash accepted) however you can purchase vouchers on line or at the airport with cash if you don't have a credit card. No meals can be served on board the flight unless purchased prior, at the additional cost of \$30 per person each way. Please advise if you would like this added on.

The check in baggage limit per person is 1 Suitcase / Bag only to the maximum weight of 23kgs. Carry-on luggage maximum weight is 7kgs.

Airfare upgrade options

The above quotes are based on a "Seat & Bag" airfare. "Seat & Bag" includes: 1 checked bag up to 23kgs + up to 7kg carry-on baggage. Air New Zealand provide complimentary tea, coffee and water. If you feel peckish on the flight, you can purchase snacks or drinks from our Inflight Bites menu, using your credit card or voucher. You can enjoy TV shows, music and games through Air New Zealand's gate-to-gate, seat-back entertainment.

Or let us know if you would like to upgrade your airfare to the following...

"The Works" includes: 1 checked bag up to 23kgs + up to 7kg carry-on baggage. Request where you sit.

During your flight, you'll be entertained with movies, games, music and TV shows through Air New Zealand's gate-to-gate, seat-back entertainment. As part of The Works option, you will receive full meal and beverage options. After you've enjoyed your meal, you have the choice of ordering extra drinks, free of charge, from your seat. **Additional cost: \$30 per person per sector (i.e. \$60 per person per return flight to Norfolk Island)**

or

"Works Deluxe" includes: You'll enjoy Premium check-in, priority baggage with 2 checked-in bags (up to 23kg each), and a carry-on bag (up to 7kg). In the air, you'll be treated to a neighbour free guarantee - we'll guarantee the seat next to you will be empty.

During your flight, you'll be entertained with movies, games, music and TV shows through Air New Zealand's gate-to-gate, seat-back entertainment. With the Works Deluxe option, you will receive full meal and beverage options plus a cheese plate, bottle of mineral water, newspaper and noise-cancelling headphones. After you've enjoyed your meal, you have the choice of ordering extra drinks free of charge during your flight. **Additional cost: \$117 per person per sector (i.e. \$234 per person per return flight to Norfolk Island)**

Please note Works Deluxe fares in line with Air New Zealand fare conditions must be paid in full at time of booking, therefore a \$900 per person non-refundable deposit applies to all passengers wishing to upgrade to Works Deluxe.

When travelling on domestic flights connecting to Norfolk Island flights

For those passengers travelling on *Qantas, Virgin, REX and all other carriers* to connect in Sydney/Brisbane to a Norfolk Island flight:

1. Note minimum connection time between your domestic and international flight is minimum two hours.
2. Passengers check-in at the domestic terminal, luggage will be checked through to Sydney/Brisbane only.
3. Collect your luggage at the Sydney/Brisbane domestic terminal and transfer with your luggage to the international terminal via train or TBus at your own expense.
4. Upon arrival in the Sydney/Brisbane international terminal proceed to the Air New Zealand check-in counter for luggage check-in and your boarding pass to Norfolk Island.
5. Upon return from Norfolk Island all passengers must clear customs in Sydney/Brisbane, collect their luggage and clear quarantine. Proceed to the domestic terminal with your luggage via train or TBus (at your own expense) and check-in for your domestic flight.

Excess Baggage

Air New Zealand [excess baggage policy](#) for flights to/from Norfolk Island

Please note the following ...

- All sporting equipment (carried in addition to the standard 23kg piece included in 'seat and bag' airfares) is now considered by the airline as an additional extra bag
- Extra bags can be prepaid through Norfolk Island Travel Centre for \$55 for the first extra piece (per person). For your flights to and from Norfolk Island the total cost is \$110 per piece/per person.
- Or alternatively the extra bag can be paid for at time of check-in, please note this will be at higher cost of \$120 per extra first piece (per person). For your flights to and from Norfolk Island the total cost is \$240 per piece/per person.
- Also note any piece of baggage that weighs over 23kg but less than 32kg and/or exceeds the total linear dimensions (length+width+height) of 158cm (62") will be subject to a further [overweight/oversize charge](#).

FAQs from clients ...

- Can my golf clubs be considered as the standard (included) 23kg piece of luggage? This is possible as long as this piece doesn't exceed total linear dimensions (length+width+height) of 158cm (62").
- Can I carry personal items/clothes etc. within their 7kg hand luggage allowance? This is possible however please note liquids restrictions for your hand luggage (all liquids, pastes, aerosols or gels such as drinks, creams, perfumes, sprays, gels, toothpaste, lip gloss and mascaras must be in individual containers not greater than 100ml in volume).
- If I'm travelling with friends can I share the cost of an extra piece between two? Yes this is possible i.e. your golf clubs within standard 23kg allowance + purchase one extra suitcase piece between 2 people for your personal luggage/pack clothes etc.

We look forward to assisting you with your travel arrangements to Norfolk Island. Should you have any queries regarding the above information, please feel free to contact us.

Kind regards,

Kelly

Kelly Schmitz and all at Norfolk Island Travel Centre

Disclaimer:

The Travel Centre Pty Ltd trading as Norfolk Island Travel Centre acts only as agent for the client in acquiring transportation, hotel accommodations, sightseeing and other privileges, or services for the clients' benefit, and on the express condition that The Travel Centre Pty Ltd shall not be responsible for any loss, accident, injury, delay, defect, omission or irregularity which may occur or be occasioned, whether by reason of any act, negligence or default of any company or person engaged in or responsible for carrying out any of the arrangements, or otherwise in connection therewith. Please note if insufficient numbers not reached for tours or in the event of poor weather conditions tour companies reserve the right to cancel tours prior to commencement. Alternative arrangements may be offered. All prices subject to change without notice.

15th NORFOLK ISLAND TRAVEL CENTRE 3D ARCHERY CHAMPIONSHIPS

RESERVATION FORM

In the comfort of your own home simply fill in the form and email, fax or AIRMAIL details to Norfolk Island Travel Centre.
Payment is easy too - just pay by direct deposit or Australian personal or bank cheque.
If you would prefer to pay by Visa or MasterCard, please add 1.5% to total costing.

PLEASE ENSURE YOU FILL BOTH SIDES OF THIS FORM

Surname:..First Name:.....

Preferred Name:

☐ Archery Competitor OR ☐ Non Archery Competitor

Surname:..First Name:.....

Preferred Name:

☐ Archery Competitor OR ☐ Non Archery Competitor

Postal Address:.....

.....

Phone Number (Landline):..... (Mobile):.....

E-mail address:.....

How did you hear about us:.....

Flight & Accommodation Arrangements:

Accommodation: (please select)

Property	Share Arrangements	Accommodation Type	Bedding Preference
<i>Aloha Apartments</i>	<i>Eg. Twin / Triple</i>	<i>Eg.1 Bedroom</i>	<input type="checkbox"/> <i>Single Bed</i>
			<input type="checkbox"/> <i>Double Bed</i>

Flight Details: (please select city of departure) ☐ Sydney, Friday 30 June to Friday 07 July 2017
☐ Brisbane, Saturday 01 July to Saturday 08 July 2017

Holiday Package \$.....pp x.....adult/s AU\$_____

Additional Bag required \$.....pp xadult/s AU\$_____

Travel Insurance: ☐ **Required** - CoverMore Domestic Plan D AU\$_____

☐ **Not Required**

Credit Card Surcharge 1.5% (if applicable) AU\$_____

TOTAL AMOUNT AU\$_____

15th NORFOLK ISLAND TRAVEL CENTRE 3D ARCHERY CHAMPIONSHIPS

PASSPORT / OFFICIAL DOCUMENT FORM - CONFIDENTIAL

THIS INFORMATION MUST BE COMPLETED AS SHOWN ON YOUR DRIVERS LICENCE / PHOTO ID

CITIZENSHIP DETAILS	<input type="checkbox"/> New Zealand <input type="checkbox"/> Australian <input type="checkbox"/> Other.....	<input type="checkbox"/> New Zealand <input type="checkbox"/> Australian <input type="checkbox"/> Other.....
SURNAME		
FIRST NAME		
MIDDLE NAME		
TITLE		
PASSPORT-OR OFFICIAL DOC NO.		
DOCUMENT EXPIRY DATE		
NATIONALITY		
ISSUING STATE OR ORGANISATION		
DATE OF BIRTH		
GENDER M/F		
PHONE NUMBER OF NIGHT PRIOR TO TRAVEL		
SPECIAL DIETARY/OTHER REQUIREMENTS eg Vegetarian, Wheelchair, etc		

If you wish to pay by credit card (1.5% surcharge applies) please complete the following:

☐ MasterCard ☐ Visa

Credit card no..... Expiry Date CVV

Cardholder Name..... Signature

Amount Authorised to charge credit card:

Please specify the options you wish to take and return this form, together with your non-refundable deposit per person to hold your confirmed reservation to:

Norfolk Island Travel Centre, P.O. Box 172, Norfolk Island 2899, South Pacific

Fax to 0011 6723 23205

or via email to kelly@travelcentre.nf

Please make cheques payable to: The Travel Centre Pty Ltd