



Norfolk Island Travel Centre

local team. local knowledge

PO Box 172, Norfolk Island 2899, Sth Pacific
Phone: Intl+ 6723 22502 Fax: Intl+ 6723 23205
Email: travel@travelcentre.nf
Website: www.norfolkislandtravelcentre.com
NBN: 280023532



Norfolk Island Travel Centre 3D Archery Championships 04 – 07 July 2016

Greetings from Norfolk Island!

Thank you for your enquiry regarding the Norfolk Island Travel Centre '**3D Archery Championships**' being held in July 2016.

Please find enclosed further information regarding the holiday package options available. To proceed with a booking please return reservation forms (attached as a Word document for easy completion and return via email) or by fax 0011 6723 23205. Alternatively you can send us your full booking details [online via our website utilizing this secure booking form link](#)

If you have any special requests or if we can be of further assistance please feel free to contact us at the Norfolk Island Travel Centre.

We hope you can join us for a holiday on our beautiful island soon!

Kind regards

Denise

Denise Reeves and all at Norfolk Island Travel Centre



Norfolk Island Travel Centre 3D Archery Championships 04 – 07 July 2016

**Combine the fun of the championship and the wonders of
Norfolk for the perfect week away!!!**

Norfolk Island is a mecca for keen archers.

Thank you very much indeed for your spectacularly organised holiday & archery competition for us.

We could not have wanted for nothing better! The organisation, service, information, welcome & farewell were perfect.

We also had a wonderful, relaxed delightful family holiday & competed in our first international archery event. Bringing trophy's home was just another unexpected bonus!...in addition to all our happy memories, photos, stories etc. *Maura H. Queensland*

For anybody considering attending next year I would have to say go for it, they could not help but be impressed and have a very pleasant week relaxing, apart from the challenging archery competition. Graham S. South Australia

For those interested in travelling with friends from your local archery club ask Norfolk Island Travel Centre about a special club promotion where some accommodation properties provide 1 in 10 archers stay free. For larger groups this can be teamed with 1 in 21 archers fly free. Conditions apply.

Norfolk has a unique beauty of its own, with its renowned tall majestic pines, sheer cliff faces, coral reefs, beautiful beaches and forest. This paradise with a past, once a convicts' nightmare, is now the peaceful home of the descendants from the *Mutiny on the Bounty*, who have their own unique culture and language. There is much to see and do on Norfolk Island:

- Dining out in the numerous restaurants
- Re-enactment of the Bounty Mutiny
- 'Light and Sound' Show
- Eco-tours
- Glass bottom boat coral reef trips
- Scenic horse riding
- Horse & Carriage tours
- Swimming and snorkeling
- Fishing
- Bush-walking
- Golf, bowls, tennis and squash & much more.

Take advantage of Norfolk's bargain shopping or perhaps simply take some time out to relax and enjoy Norfolk's peaceful existence.

Holiday Package Includes:

- ✓ Return economy class airfare to Norfolk Island ex Sydney or Brisbane
- ✓ All pre-paid airline taxes
- ✓ Meet & Greet at the Airport
- ✓ Return airport transfers on Norfolk Island
- ✓ 7 nights accommodation
- ✓ Includes: 7 days car hire (petrol is additional & for some properties car surcharge is also additional)
- ✓ Complimentary Miniature Golf – *golf your way through Norfolk's history*
- ✓ Complimentary "A Walk in the Wild" – *a unique rainforest experience*
- ✓ Bonus Norfolk Island discount shopping card

See each individual property description for any added bonuses!!

Perhaps you would like to relax before or after the event. Let us know if you would like to extend your holiday

Flight Times (subject to change)

Holiday package prices are based on the following flights ...

SYDNEY

Friday 01 July 2016 – Air New Zealand Flight NZ 762

Departs Sydney International Terminal 9:35am / Arrives Norfolk Island 1:40pm

Friday 08 July 2016 – Air New Zealand Flight NZ 763

Departs Norfolk Island 2:50pm / Arrives Sydney International Terminal 4:15pm

BRISBANE

Saturday 02 July 2016 – Air New Zealand Flight NZ 764

Departs Brisbane International Terminal 11:00am / Arrives Norfolk Island 2:45pm

Saturday 09 July 2016 – Air New Zealand Flight NZ 765

Departs Norfolk Island 3:55pm / Arrives Brisbane International Terminal 5:10pm

'Hibiscus Regal Apartments' 'Official 2016 3D Archery Championships sponsor'

Hibiscus Regal features 8 one-bedroom apartments centrally located close to town yet within a private sub-tropical garden. ***Our focus is to provide guests with value for money and comfort.*** Each fully self-contained apartment accommodates up to 3 guests. Apartment layout is functional and includes: fully equipped kitchen with oven, microwave and cooktop, adjoining living area featuring a dining table and chairs, sofa, armchair and flat screen TV with full range of digital television channels. Bedroom is a separate room offering privacy from the living area, bed can be configured as a luxury King bed or two single beds (the sofa easily converts to a pull out bed in the living area). Bathrooms are practical with a walk in shower and instant gas hot water, all towels provided with optional towel change mid-week. Apartments come with their own porch area plus guests share a gas BBQ area and guest laundry equipped with washing machine and dryer. We haven't forgotten the Norfolk Island must haves including a full picnic set with each unit to enable guests to take advantage of the many scenic (free) BBQ spots around the island, beach towels and each apartment is provided with a Norfolk Island sim card, mobile phone and minimum \$5 call credit for use during your stay.

Includes: 7 days car hire included in your stay (note Hibiscus Cars include all surcharges and insurance / only petrol usage is extra).

Bonus: Return airport transfers, and half day island tour.



'Hibiscus Regal Apartments' continued...

ADULT PACKAGE PRICES – 8 days / 7 nights

<i>From: \$AU per person</i>	<i>Twin One Bdrm</i>	<i>Sole One Bdrm</i>
<i>Ex Brisbane</i>	999	1339
<i>Ex Sydney</i>	1039	1379

'Pine Valley Apartments' **'Official 2016 3D Archery Championships sponsor'**

Pine Valley Apartments are centrally located, just a short walk to restaurants and shops. Comfortable fully self-contained one and two bedroom units set amongst beautiful gardens. Facilities include guest laundry, transit lounge and barbeque gazebo area.

Includes: 7 days car hire included in your stay (\$20 per day discounted hire car fee additional)

Bonus: Airport transfers and Half Day orientation tour



ADULT PACKAGE PRICES - 8 days / 7 nights

<i>From: \$AU per person</i>	<i>Quad Two Bdrm</i>	<i>Triple Two Bdrm</i>	<i>Twin One Bdrm</i>	<i>Twin Two Bdrm</i>	<i>Sole One Bdrm</i>
<i>Ex Brisbane</i>	919	949	1049	1099	1419
<i>Ex Sydney</i>	969	999	1099	1149	1469

'Fletcher Christian Apartments' **'Official 2016 3D Archery Championships sponsor'**

Ideally located close to shops and restaurants, these one and two bedroom apartments offer the makings of a very pleasant stay on Norfolk Island. All units are self-contained, serviced daily and are set amongst beautiful tropical gardens. A guest swimming pool and BBQ area is also available for guests use.

Includes: 7 days car hire included in your stay (includes all hire car fees / only petrol usage is extra).

Bonus: Return airport transfers, and half day island tour.



ADULT PACKAGE PRICES - 8 days / 7 nights

<i>From: \$AU per person</i>	<i>Quad Two Bdrm</i>	<i>Triple Two Bdrm</i>	<i>Twin One Bdrm</i>	<i>Twin Two Bdrm</i>	<i>Sole One Bdrm</i>
<i>Ex Brisbane</i>	949	1029	1099	1199	1539
<i>Ex Sydney</i>	999	1079	1149	1249	1589

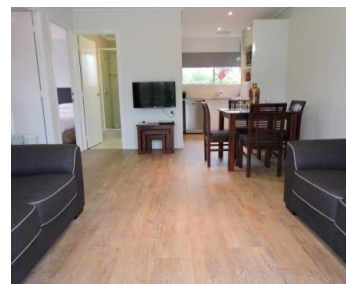
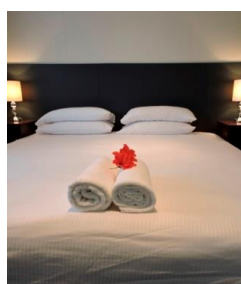
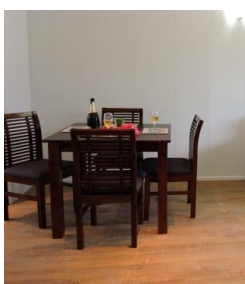
'Hibiscus Crown Apartments' 'Official 2016 3D Archery Championships sponsor'

You could say Hibiscus Crown is within Norfolk's (unofficial) CBD! A short 1 minute drive to shops, cafes and restaurants. Located on New Cascade Road leading off the main street ***this is a great property for those who want to be close to town yet enjoy tranquility and privacy within a lush garden setting.*** Apartment layout is functional and includes: fully equipped kitchen with oven, microwave and cooktop, adjoining living area featuring a dining table and chairs, sofa, armchair and flat screen TV with full range of digital television channels. Bedroom/s are separate to the living area, beds can be configured as a luxury King bed or two single beds in each bedroom (the sofa easily converts to a pull out bed in the living area). Bathrooms feature walk in shower and instant gas hot water, all towels provided with optional towel change mid-week. Apartments come with their own porch area plus guests share a gas BBQ area and guest laundry equipped with washing machine and dryer. We haven't forgotten the Norfolk Island must haves including a full picnic set with each unit to enable guests to take advantage of the many scenic (free) BBQ spots around the island, beach towels and each apartment is provided with a Norfolk Island sim card, mobile phone and minimum \$5 call credit for use during your stay.

Includes: 7 days car hire included in your stay (note Hibiscus Cars include all surcharges and insurance / only petrol usage is extra).

Bonus: Return airport transfers, and half day island tour.

******Owners have commenced renovations and are aiming & hoping for the property to be re-graded 4 star by the end of 2015. Book now at 3 star prices for a bonus room upgrade!***



ADULT PACKAGE PRICES - 8 days / 7 nights

<i>From: \$AU per person</i>	<i>Quad Two Bdrm</i>	<i>Triple Two Bdrm</i>	<i>Twin One Bdrm</i>	<i>Twin Two Bdrm</i>	<i>Single One Bdrm</i>
<i>Ex Brisbane</i>	1079	1139	1199	1269	1529
<i>Ex Sydney</i>	1129	1189	1249	1319	1579

'Castaway Hotel Norfolk Island'

Castaway one of the most centrally located hotels on Norfolk Island, recently purchased by a local young couple with full room renovations due to be complete by May 2015, guests can choose from 8 hotel style rooms fully renovated including new bathrooms or 6 spacious self-contained apartments newly refurbished. The stylish reception, restaurant and bar incorporates fresh modern style yet intertwines hotel history and special family stories Sarah is only too happy to share with guests!

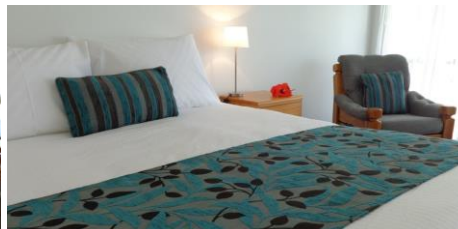
A relaxing setting for breakfast, lunch, dinner or high tea with views through French doors framing a sub tropical garden and serene mountain back-drop.

Includes: 7 days car hire included in your stay (includes all hire car fees / only petrol usage is extra).

Bonus: Return airport transfers, and half day island tour.

Includes: Cooked Buffet Breakfast

Garden view hotel rooms



'Castaway Hotel Norfolk Island' continued...

ADULT PACKAGE PRICES – 8 days / 7 nights

<i>From: \$AU per person</i>	<i>Twin Garden Room</i>	<i>Sole Garden Room</i>
<i>Ex Brisbane</i>	1459	2159
<i>Ex Sydney</i>	1499	2199

Banyan self-contained apartments



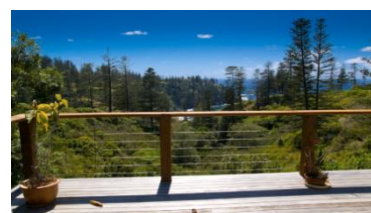
ADULT PACKAGE PRICES - 8 days / 7 nights

<i>From: \$AU per person</i>	<i>Quad Two Bdrm</i>	<i>Triple Two Bdrm</i>	<i>Twin Two Bdrm</i>	<i>Twin One Bdrm</i>
<i>Ex Brisbane</i>	1299	1439	1759	1499
<i>Ex Sydney</i>	1339	1479	1799	1539

'Ball Bay House' – 3 Bedroom House

Ball Bay House is a secluded holiday house accommodation on Norfolk Island. The house overlooks majestic Ball Bay and you can awaken each morning with the sunrise. There are three bedrooms which comfortably accommodate up to 6 persons. The interior boasts our beautiful Norfolk pine timber features. Ball Bay House is completely self-contained with all the necessary facilities, two Bathrooms, to enjoy a relaxing holiday on the island set on 6 acres of private bush and gardens relax retreat. Please note that third bedroom is open plan area on the second floor.

Optional: 7 days car hire available \$20 per day for 1 car (up to 4 guests) OR Optional: 7 days hire for 2 cars (more than 4 guests) available at \$50 per day



ADULT PACKAGE PRICES - 8 days / 7 nights

<i>From: \$AU per person</i>	<i>8 Share House</i>	<i>7 Share House</i>	<i>6 Share House</i>	<i>5 Share House</i>	<i>4 Share House</i>	<i>3 Share House</i>	<i>2 Share House</i>
<i>Ex Brisbane</i>	899	919	939	959	999	1049	1149
<i>Ex Sydney</i>	949	969	989	1009	1049	1099	1199

Whitewood Sea

Owned & Managed by Norfolk Island Travel Centre



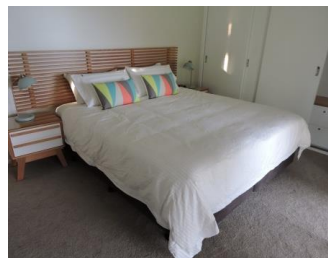
Enjoy magnetic views across Creswell Bay to majestic Phillip Island from a beautifully appointed, newly renovated house. Modern throughout, this two bedroom two bathroom house has attractive features including hardwood flooring, DVD player and digital TV, bluetooth sound system, wifi access (usage costs apply), supersize bath, deluxe picnic basket and expansive verandah to enjoy the view. Guests will love the wrap-around lounge to switch between sea views and the tellie. Accessibility is excellent with ramp access to the house and an extra-large shower in the main bathroom. Perfectly located near Norfolk's best swimming beach Emily Bay, world

'Whitewood Sea' continued...

heritage listed KAVHA historic area, nature walks and two of Norfolk's best restaurants (got to love Dinos being only 3 doors down) Whitewood Sea is positioned perfectly to set the tone for a relaxing, unforgettable holiday on Norfolk Island www.whitewoodsea.com

Includes: 7 days car hire included in your stay (hire car surcharge including basic insurance is included however please note petrol usage additional)

Bonus: Meet & Greet at Norfolk Island airport, and half day island tour.



Special discounted price for Norfolk Island Travel Centre clients

8 days / 7 nights - ADULT PACKAGE PRICES

From: \$AU per person	Quad Two Bdrm	Triple Two Bdrm	Twin One Bdrm	Twin Two Bdrm	Single One Bdrm
Ex Brisbane	1199	1249	1399	1549	2049
Ex Sydney	1239	1289	1439	1589	2089

If the accommodation of your choice is not included in holiday packages above, Norfolk Island Travel Centre will be happy to provide you with a specially discounted quote based on your preference.

Prices are subject to availability and subject to change up until time of final payment and ticketing is completed

FURTHER INFORMATION

Conditions / Cancellation Penalties

Please note that a non-refundable deposit of \$200 per person is due upon booking. **Final payment is due prior to Monday 28th March 2016.** Airfare is subject to availability and non-refundable after issue. Changes are permitted until day before departure however date/route changes can only be made within 7 days travel dates either side of your original booked travel dates. Amendments, upgrades and name changes are NOT permitted within 24 hours prior to departure. Payment of a change fee (per passenger) applies plus any applicable upgrade fees to cover the difference between the original fare and the new fare. Accommodation cancellation penalties apply within 90 days prior to travel. Within 60 days of travel, up to 100% cancellation fees may apply. We strongly recommend travel insurance to protect you in some instances for unforeseen cancellation.

Payment Options

Prices shown are in Australian dollars and are payable by personal or bank cheques or by direct deposit into our Commonwealth Bank account (please see bank details below).

If you would prefer to pay by Visa or MasterCard, please add 1.5% to the total cost of your holiday package.

Bank Account Details

Direct deposits into our Commonwealth Bank account can be made at your local Commonwealth Bank or via online banking.

Account details as follows...

Account Name: 'The Travel Centre Pty Ltd Trust Account'
BSB Number: 062 950
Account Number: 1008 4974

***Important* Please confirm amount and date of payment into our bank account when monies have been transferred.**

Archery Registration

The registration fee of \$100 for adults / \$50 for Juniors & Cubs is additional to cost of holiday package prices and is payable direct to the Archery Club once on the island.

Presentation Dinner will be on Thursday 07 July - cost is also additional with venue, time and price TBA. For more event information please email archery@norfolk.nf

NEW! Trad shooting activities available Monday, Tuesday & Thursday afternoons. Traditional Archery – back to basics! In 2016 an additional Traditional Archery event is available to all 3D Archery Championship participants. For Trad shooter and also for those who don't normally shoot Trad you're in for a treat in getting back to basics with simple, uncomplicated bows and handcrafted arrows. This will be Norfolk Island's first progressive around the island shoot. Each afternoon after comp shoots, you'll head to properties across the island and here the fun will begin as we test your Trad skills! Entry is included in your Archery registration, BYO Trad and wooden arrows.

Please note: Archery registration is not included in holiday package prices. Registration fee to be paid to Archery Norfolk Island

Travel Insurance

We strongly recommend that passengers be covered by adequate travel insurance or protection against cancellation fees, illness, injury, emergency assistance, loss of baggage and personal items, additional accommodation or repatriation to Australia due to illness, accident or aircraft delays (refer to policy wording for full details of cover). Please bear in mind your destination is an island and travel is subject to aircraft diversion in extreme weather conditions, also important to note Medicare does not provide cover on Norfolk Island. Passengers electing not to take travel insurance do so at their own risk and accept responsibility for their own costs or losses sustained. **Please be aware that you are not covered by travel insurance until payment (Aussie Travel Cover & CoverMore) and the completed, signed and dated original application form (SureSave) is received by the Norfolk Island Travel Centre.** This should be forwarded ideally in conjunction with deposit payment of your holiday package.

To enable us to provide you with cost effective travel insurance options for the range of age groups the Norfolk Island Travel Centre offers cover with travel insurance providers **CoverMore - Comprehensive Plan/Area 4, SureSave - Comprehensive Plan/Region 5** and **Aussie TravelCover - Traditional Plan A NZ, Indonesia & Fiji**. Our quotes including a special 20% Travel Centre discount as shown below. A full Brochure/Product Disclosure Document (PDS) outlining full benefits, terms and conditions of cover is available from the Norfolk Island Travel Centre and will be supplied with your confirmation letter, if you have indicated on your Reservation Form you wish to proceed with travel insurance. If you would like a PDS sent to you now, please let your Consultant know.

Norfolk Island Travel Centre is happy to offer a 20% discount to clients:

8 days cover – All prices featured below are based on \$100 excess. Contact Norfolk Island Travel Centre if you would like a quote for alternative Nil or \$250 (CoverMore only) excess options.

Note: Bonus Family (or travelling companion) discounts may apply and will be confirmed at the time of booking.

				60-69yrs		75-79yrs		
Up to \$3,000 Cancellation cover* (per policy)	-	-	-	\$120.00 per person Less 20% \$96.00 CoverMore	-	\$246.00 per person Less 20% \$196.80 CoverMore	-	
	01-49yrs	50-59yrs	60yrs	61-70yrs	71-74yrs	75-80yrs**	81-84yrs**	85+yrs***
Unlimited Cancellation Cover	\$78.00 per person Less 20% \$62.40 Suresave	\$95.00 per person Less 20% \$76.00 Suresave	\$109.25 per person Less 20% \$87.40 Aussie TravelCover	\$128.25 per person Less 20% \$102.60 Aussie TravelCover	\$180.50 per person Less 20% \$144.40 Aussie TravelCover	\$266.00 per person Less 20% \$212.80 Aussie TravelCover	\$465.50 per person Less 20% \$372.40 Aussie TravelCover	\$505.00 per person Less 20% \$404.00 Suresave

**Aussie Travel Cover: All travellers aged 75 years and over must complete an over the phone Medical Assessment prior to policy purchase (see below for contact details)

*** SureSave: All travellers aged 81 years and over must complete an over the phone Medical Assessment prior to policy purchase (see below for contact details)

Insurance Underwriters:

CoverMore – Great Lakes Reinsurance (UK) PLC trading as "Great Lakes Australia"

Aussie Travel Cover – Australian Insurance Ltd (Allianz)

Important note:

- (1) **CoverMore*** benefits are per adult named on the policy, with the exception of cancellation cover, which is per policy
- (2) **Aussie Travel Cover and Suresave** benefits are per adult named on the policy

Above prices are per person cost for single passengers travelling from Australia to Norfolk Island

Please ensure when completing the enrolment form that all adults to be covered by travel insurance sign at the bottom of the form and clearly indicate the options you choose

e.g. CoverMore – Cancellation cover Unlimited or capped to \$3,000 per policy; excess Nil, \$100 or \$250.

SureSave (through TravelClear) Pre-existing Medical Conditions may require assessment by the TravelClear Medical Assessment team. If you have pre-existing medical condition/s please advise your Travel Centre consultant who will provide you with a TravelClear quote number for you to then call the TravelClear Assessment team on **1300 763 872**. **Unfortunately there is no discount available for pre-existing medical cover.**

Travellers 81 years of Age and over are required to undergo assessment by the TravelClear Medical Assessment team. If SureSave is your preferred travel insurance provider please advise your Travel Centre consultant, who will then provide you with a quote number. You would then need to call the TravelClear Assessment team on **1300 763 872**. **Unfortunately there is no discount available for pre-existing medical cover.**

AussieTravelCover:

Pre-existing Medical Conditions may require assessment by the AussieTravelCover Medical Assessment team. If you have pre-existing medical condition/s please advise your Travel Centre consultant who will provide you with a quote number. You would then need to call the AussieTravel Cover medical assessment line on **1800 661 345**. There may not be any additional medical loading depending on your pre-existing medical condition/s. **The Norfolk Island Travel Centre is happy to pass on a 20% discount for pre-existing medical applications.**

Travellers 75 years of Age and over are required to undergo assessment by the AussieTravelCover Medical Assessment team. If AussieTravelCover is your preferred travel insurance provider please advise your Travel Centre consultant, who will then provide you with a quote number. You would then need to call the AussieTravel Cover Assessment line on **1800 661 345**. There may not be any additional loading depending on the outcome of your assessment. **The Norfolk Island Travel Centre is happy to pass on a 20% discount.**

CoverMore Pre-existing Medical Conditions may require assessment by the CoverMore Medical Assessment team. You may complete your pre-existing medical assessment [online via this link](#). Alternatively please call the CoverMore Assessment team on **1300 916 517** for assistance.

Once you have received your assessment and Approval number, contact the Travel Centre with the approval number to enable us to provide you with an accurate quote for your insurance including your pre-existing medical condition/age approval. **We will pass on a 20% discount for pre-existing medical applications arranged through the Travel Centre.**

Are you planning multiple trips throughout the year?

Have you considered an annual multi-trip policy? Ask the Travel Centre for a competitive quote with **our special Norfolk Island Travel Centre 20% discount**, just advise us of the countries you intend visiting and the duration of each journey (a journey is defined as the period commencing at the time you leave your home and ceasing at the time you return to your home). For example if you are aged up to 50 years you could have annual travel insurance cover for 12 months from **as little as \$141.40** (maximum trip duration for each trip being 30 days).

Passport

Now is also a good time to check that your passport will be current for your period of travel. Please advise if the name on your passport is different to your common usage name, the name on your air ticket must be the same as that on your passport.

Australian citizens who hold a valid passport or a valid Australian Document of Identity and New Zealand citizens who hold a valid passport will, subject to the answers provided on their Passenger Arrival Card, be granted a deemed unrestricted entry permit on arrival at Norfolk Island.

A Document of Identity - is obtainable from any Post Office free of charge for any Australian citizen. Please allow time for processing.

Visitors with a foreign passport will require the following: A passport that is valid for 30 days more than the period of intended stay, an Australian multiple entry visa that is valid for 30 days more than the period of intended stay and an airline ticket for onward travel to Australia.

Tours on the Island

Norfolk Island has a great variety of tours available for you to enjoy. Norfolk Island Travel Centre is happy to assist with pre-booking your tour and dining requirements. As some tours have limited availability and because you're visiting during a busy period we strongly recommend pre-booking to avoid disappointment. Visit our website for our full independent list of tours and activities that Norfolk Island has to offer: <https://www.norfolkislandtravelcentre.com/tours-activities>

Note: Prices are valid until 31 March 2016 and may change/increase slightly after this date. Prices on or after 01 April 2016 to be advised. We will include a copy of our tour brochure within your travel documents, however if you wish to pre-book any of these popular activities in the meantime please let us know and we will book and confirm your place on the tours and activities for you.

Car Hire

Please note where car hire is a bonus to holiday packages (as indicated above) if you choose to take up this bonus and use the hire car whilst on Norfolk Island you will be required to pay the compulsory car surcharge directly to the car hire company whilst on island (if this car surcharge is not already included in accommodation rate as stated above). Car surcharge ranges from \$15 to \$30 per day depending on the car hire company the property uses and the excess that you choose.

If you'd like to pre-pay the car surcharge before you arrive please indicate on your reservation and we'll add to your account so it will be only the petrol usage you will need to budget for whilst on the island.

Mobile Phones

You are able to use your mobile phone on Norfolk Island. Mobile phones must not be networked locked as you will need to purchase a Norfolk Island SIM card. SIM cards cost AU\$20 and include AU\$10 worth of call time. Mobile phone SIM cards and recharge cards can be purchased from a variety of stores on the Island.

International Roaming:

International Roaming is available for visitors to the Island who have international roaming activated on their Postpaid Mobiles. International roaming is available with most larger service providers. Roaming is not available for prepaid mobiles. Normally, roaming is already active on your postpaid service, however it may pay to check with your service provider prior to coming to the island.

Free Wifi:

Free wifi is available at the Norfolk Island Airport during flight arrival and departure times only.

Check-in

Flights depart from the international terminal at Sydney and Brisbane airports. Check-in is required two hours prior to the scheduled departure time.

Air New Zealand operates flight to Norfolk Island.

Onboard they provide free of charge tea, coffee & water. Snacks and drinks can be purchased on board at an additional cost by credit card (no cash accepted) However you can purchase vouchers on line or at the airport with cash if you don't have a credit card. No meals can be served on board the flight unless purchased prior, at the additional cost of \$30 per person each way. Please advise if you would like this added on.

The check in baggage limit per person is 1 Suitcase / Bag only to the maximum weight of 23kgs. Carry-on luggage maximum weight is 7kgs.

Airfare upgrade options

The above quotes are based on a "Seat & Bag" airfare. "Seat & Bag" includes: 1 checked bag up to 23kgs + up to 7kg carry-on baggage. Air New Zealand provide complimentary tea, coffee and water. If you feel peckish on the flight, you can purchase snacks or drinks from our Inflight Bites menu, using your credit card or voucher. You can enjoy TV shows, music and games through Air New Zealand's gate-to-gate, seat-back entertainment.

Or let us know if you would like to upgrade your airfare to the following...

"The Works" includes: 1 checked bag up to 23kgs + up to 7kg carry-on baggage. Request where you sit.

During your flight, you'll be entertained with movies, games, music and TV shows through Air New Zealand's gate-to-gate, seat-back entertainment. As part of The Works option, you will receive full meal and beverage options. After you've enjoyed your meal, you have the choice of ordering extra drinks, free of charge, from your seat. **Additional cost: \$30 per person per sector (i.e. \$60 per person per return flight to Norfolk Island)**

or

"Works Deluxe" includes: You'll enjoy Premium check-in, priority baggage with 2 checked-in bags (up to 23kg each), and a carry-on bag (up to 7kg). In the air, you'll be treated to a neighbour free guarantee - we'll guarantee the seat next to you will be empty.

During your flight, you'll be entertained with movies, games, music and TV shows through Air New Zealand's gate-to-gate, seat-back entertainment. With the Works Deluxe option, you will receive full meal and beverage options plus a cheese plate, bottle of mineral water, newspaper and noise-cancelling headphones. After you've enjoyed your meal, you have the choice of ordering extra drinks free of charge during your flight. **Additional cost: \$117 per person per sector (i.e. \$234 per person per return flight to Norfolk Island)**

Please note Works Deluxe fares in line with Air New Zealand fare conditions must be paid in full at time of booking, therefore a \$900 per person non-refundable deposit applies to all passengers wishing to upgrade to Works Deluxe.

When travelling on domestic flights connecting to Norfolk Island flights

For those passengers travelling on ***Qantas, Virgin, REX and all other carriers*** to connect in Sydney/Brisbane to a Norfolk Island flight:

1. Note minimum connection time between your domestic and international flight is minimum two hours.
2. Passengers check-in at the domestic terminal, luggage will be checked through to Sydney/Brisbane only.
3. Collect your luggage at the Sydney/Brisbane domestic terminal and transfer with your luggage to the international terminal via train or TBus at your own expense.
4. Upon arrival in the Sydney/Brisbane international terminal proceed to the Air New Zealand check-in counter for luggage check-in and your boarding pass to Norfolk Island.
5. Upon return from Norfolk Island all passengers must clear customs in Sydney/Brisbane, collect their luggage and clear quarantine. Proceed to the domestic terminal with your luggage via train or TBus (at your own expense) and check-in for your domestic flight.

Excess Baggage

Air New Zealand has recently announced a [new excess baggage policy](#) for flights to/from Norfolk Island taking effect from 01 February 2013.

Please note the following key changes...

- All sporting equipment (carried in addition to the standard 23kg piece included in 'seat and bag' fares) is now considered by the airline as an additional extra bag
- Note carriage of firearms is a separate to the above see Air New Zealand website for more information or contact Norfolk Island Travel Centre.
- Extra bags can be prepaid through Norfolk Island Travel Centre for \$55 for the first extra piece (per person). For your flights to and from Norfolk Island the total cost is \$110 per piece/per person.

- Or alternatively the extra bag can be paid for at time of check-in, please note this will be at higher cost of \$120 per extra first piece (per person). For your flights to and from Norfolk Island the total cost is \$240 per piece/per person.
- Also note any piece of baggage that weighs over 23kg but less than 32kg and/or exceeds the total linear dimensions (length+width+height) of 158cm (62") will be subject to a further [overweight/oversize charge](#).

When travelling on domestic flights connecting to Norfolk Island flights

For those passengers travelling on **Qantas, Virgin, REX and all other carriers** to connect in Sydney/Brisbane to a Norfolk Island flight:

6. Note minimum connection time between your domestic and international flight is minimum two hours.
7. Passengers check-in at the domestic terminal, luggage will be checked through to Sydney/Brisbane only.
8. Collect your luggage at the Sydney/Brisbane domestic terminal and transfer with your luggage to the international terminal via train or TBus at your own expense.
9. Upon arrival in the Sydney/Brisbane international terminal proceed to the Air New Zealand check-in counter for luggage check-in and your boarding pass to Norfolk Island.
10. Upon return from Norfolk Island all passengers must clear customs in Sydney/Brisbane, collect their luggage and clear quarantine. Proceed to the domestic terminal with your luggage via train or TBus (at your own expense) and check-in for your domestic flight.

We look forward to assisting you with your travel arrangements. Should you have any queries regarding the above information, please feel free to contact us.

Kind Regards,

Denise

Denise Reeves and all at Norfolk Island Travel Centre

Disclaimer:

The Travel Centre Pty Ltd trading as Norfolk Island Travel Centre acts only as agent for the client in acquiring transportation, hotel accommodations, sightseeing and other privileges, or services for the clients' benefit, and on the express condition that The Travel Centre Pty Ltd shall not be responsible for any loss, accident, injury, delay, defect, omission or irregularity which may occur or be occasioned, whether by reason of any act, negligence or default of any company or person engaged in or responsible for carrying out any of the arrangements, or otherwise in connection therewith. Please note if insufficient numbers not reached for tours or in the event of poor weather conditions tour companies reserve the right to cancel tours prior to commencement. Alternative arrangements may be offered. All prices subject to change without notice.

Norfolk Island Travel Centre 3D Archery Championships RESERVATION FORM

In the comfort of your own home simply fill in the form and email, fax or AIRMAIL details to Norfolk Island Travel Centre.
Payment is easy too - just pay by direct deposit or Australian personal or bank cheque.
If you would prefer to pay by Visa or MasterCard, please add 1.5% to total costing.

PLEASE ENSURE YOU FILL BOTH SIDES OF THIS FORM

Surname: **First Name:**

Preferred Name:

Surname: **First Name:**

Preferred Name:

Postal Address:

Phone Number (Landline): **(Mobile):**

E-mail address:

How did you hear about us:

Flight & Accommodation Arrangements:

Accommodation: (please select)

Property	Share Arrangements	Accommodation Type	Bedding Preference
<i>e.g. Hibiscus Regal</i>	<i>Double</i>	<i>1 Bedroom</i>	<input type="checkbox"/> <i>Single Bed</i>
			<input type="checkbox"/> <i>Double Bed</i>

Flight Details: (please select city of departure) ☐ Sydney, Friday 01July to Friday 08July
☐ Brisbane, Saturday 02July to Saturday 09July

Holiday Package \$.....pp x.....adult/s **AU\$**

Car hire surcharge \$.....p/day x.....days/s **AU\$**

Travel Insurance: ☐ **Required** (please indicate below)

☐ AussieTravel Cover ☐ SureSave ☐ CoverMore

☐ **Not Required**

\$.....passenger one + \$.....passenger two **AU\$**

Credit Card Surcharge 1.5% (if applicable) **AU\$**

TOTAL AMOUNT **AU\$**

Norfolk Island Travel Centre 3D Archery Championships
PASSPORT FORM- CONFIDENTIAL

**THIS INFORMATION MUST BE COMPLETED AS SHOWN ON YOUR PASSPORT OR
DOCUMENT OF IDENTITY**

PASSPORT DETAILS	<input type="checkbox"/> Australian <input type="checkbox"/> New Zealand Other.....	<input type="checkbox"/> Australian <input type="checkbox"/> New Zealand Other.....
SURNAME		
FIRST NAME		
MIDDLE NAME		
TITLE		
PASSPORT OR OFFICIAL DOC NO.		
PASSPORT EXPIRY DATE		
NATIONALITY		
ISSUING STATE OR ORGANISATION		
DATE OF BIRTH		
GENDER M/F		
PHONE NUMBER OF NIGHT PRIOR TO TRAVEL		
SPECIAL DIETARY/OTHER REQUIREMENTS e.g. Vegetarian, Wheelchair, etc		

If you wish to pay by credit card (1.5% surcharge applies) please complete the following:

☐ MasterCard

☐ Visa

Credit card no CVV.....

Expiry Date Cardholder Name

Signature.....

Please specify the options you wish to take and return this form, together with your non refundable deposit per person to hold your confirmed reservation to:

Norfolk Island Travel Centre, P.O. Box 172, Norfolk Island 2899, South Pacific
 or via fax to 0011 6723 23205
 or via email to denise-r@travelcentre.nf

Please make cheques payable to: The Travel Centre